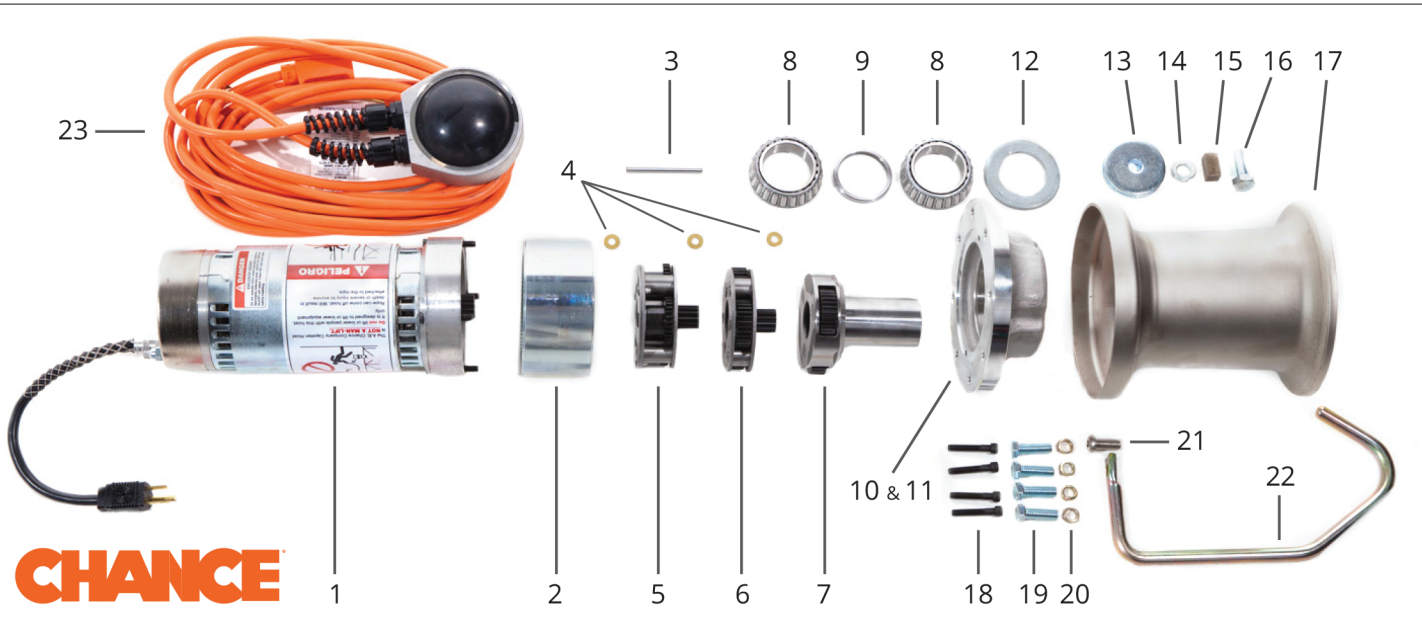


# PARTS LIST FOR C3081170

## CHANCE® SERIES 90 :: 1,000LB. 115VAC ELECTRIC CAPSTAN HOIST



| ITEM# | DESCRIPTION   | PART#       | QTY     |
|-------|---|-------------|---------|
| 1     | Motor Assembly 115v Complete  | RMA-115v    | 1       |
| 2     | Ring Gear (internal tooth) R74  | P308-1341   | 1       |
| 3     | Center Pin  | P308-1226   | 1       |
| 4     | Thrust Washer   | P308-1029   | 3       |
| 5     | 1st Carrier Assembly  | RCA-1ST     | 1       |
| 6     | 2nd Carrier Assembly  | RCA-2ND     | 1       |
| 7     | Output Shaft Assembly   | RSA-1000#   | 1       |
| 8     | Cone Bearing  | P316-0299   | 2       |
| 9     | Bearing Spacer (1000 lb)  | P308-1025   | 1       |
| 10    | Bearing Race (inside Item 11)   | P316-0300   | 2       |
| 11    | Output Housing (1000 lb)  | P308-1028-B | 1       |
| 12    | Nilos Ring  | P316-0298   | 1       |
| 13    | Washer RD 0.531 x 2.375 Plated (for drum attachment)                            | P308-0287   | 1       |
| 14    | Split Lockwasher 0.5" Plated  | P001-0994   | 1       |
| 15    | Drum Key (1000 lb)  | P308-1157   | 1       |
| 16    | Hex Capscrew 0.5"-13 x 1.25" Grade 5  | P001-1521   | 1       |
| 17    | Capstan Drum Assembly (1000 lb)   | RDA-1000#   | 1       |
| 18    | Socket Head Capscrew 0.25"-20 x 1.5"  | P001-1542   | 4       |
| 19    | Hex Head Capscrew 3/8"-16 x 1.25" Grade 5 Zinc Plated                           | P001-1161   | 4       |
| 20    | Lock Washer 3/8" HC Plated  | P001-1195   | 4       |
| 21    | Button-Head Socket Capscrew SS 3/8"-16 x 1"                                     | P308-1517   | 1       |
| 22    | Rope Hook Assembly (1000 lb) (Includes item #21)                                | RHA-1000#   | 1       |
| 23    | Electric Foot Switch Repair Kit (See footswitch breakdown for individual parts) | RFS-ELEC    | 1       |
| 24    | Grease (not pictured)   | C303-1234   | 4oz can |
| 25    | Decal and Literature Replacement Kit for C308-1170 (not pictured)               | RMD-1170    | 1       |

